

Information sheet for Pacific Islander Condo 501A at 249 Kapili Street, Honolulu, HI

For more information contact **Patty Ferdinand**, Property Manager, (RS-75245) at

[WaikikiRental@aol.com](mailto:WaikikiRental@aol.com) or 1-808-683-8140

TA-048-225-2800-01

More information for rates and availability at <http://www.SurfCondo.com>

**Pacific Islander, 5th floor, studio unit** (456 sq. ft.) remodeled unit, lanai and mountain views. Vacation ready! LOCATION, LOCATION in this fully remodeled studio unit. Just blocks from world famous Waikiki Beach and International Marketplace. Walk to beach, shops and restaurants in minutes. Includes Kitchen, bath and beach accessories. Queen size bed, fold down couch, kitchen island with bar seating, quartz counters, walk-in glass enclosure shower with rain shower head, A/C in unit, private lanai, laundry in building. Free Wi Fi, TV with basic cable channels. No parking space. Security gate building entry. Minimum 90 day rental term. Rates start at \$2,000 per 30 days, plus cleaning & Hawaii state taxes.



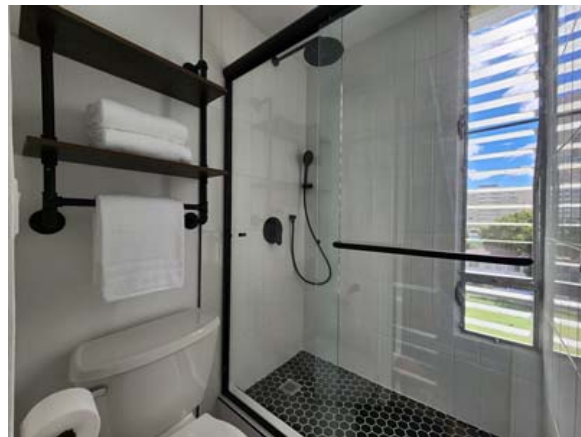
Completely remodeled studio



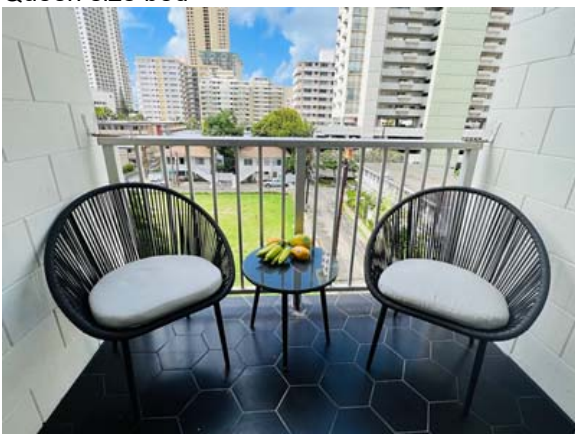
Sofa folds down into an additional bed



Queen size bed



Shower with rain shower and hand held shower heads



Serene and private lanai



Secure entry into the building